

How to modify Linux Configuration for installing PCCOM driver

First, get your kernel source file and type 「make menuconfig」 in your kernel source folder.

```
[root@localhost ~]# ls
anaconda-ks.cfg Desktop install.log install.log.syslog src workspace
[root@localhost ~]# cd src/
[root@localhost src]# ls
linux-2.6.15.i686 linux-2.6.15.i686.tgz
[root@localhost src]# cd linux-2.6.15.i686
[root@localhost linux-2.6.15.i686]# ls
arch CREDITS fs Kbuild Makefile README sound
block crypto include kernel Makefile.orig REPORTING-BUGS System.map
configs Documentation init lib mm scripts usr
COPYING drivers ipc MAINTAINERS net security vmlinux
[root@localhost linux-2.6.15.i686]# make menuconfig
```

Fig:1

Select 「Device Drivers」

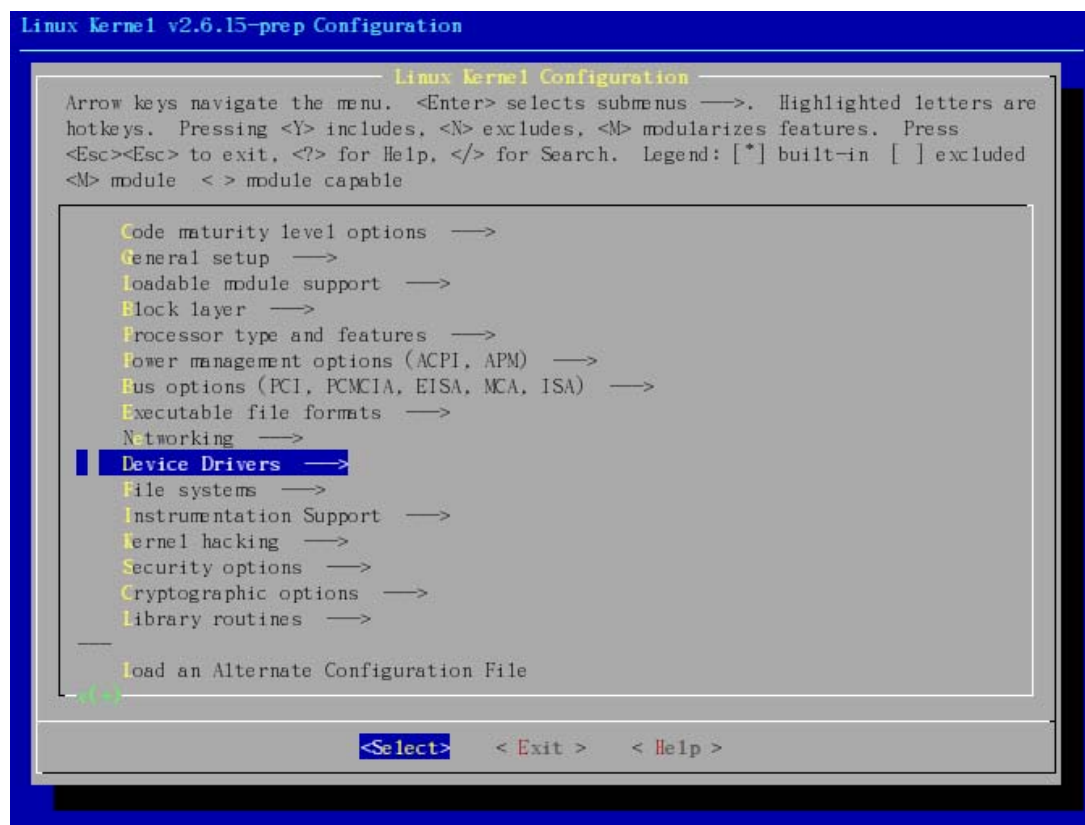


Fig:2

Select 「Character devices」

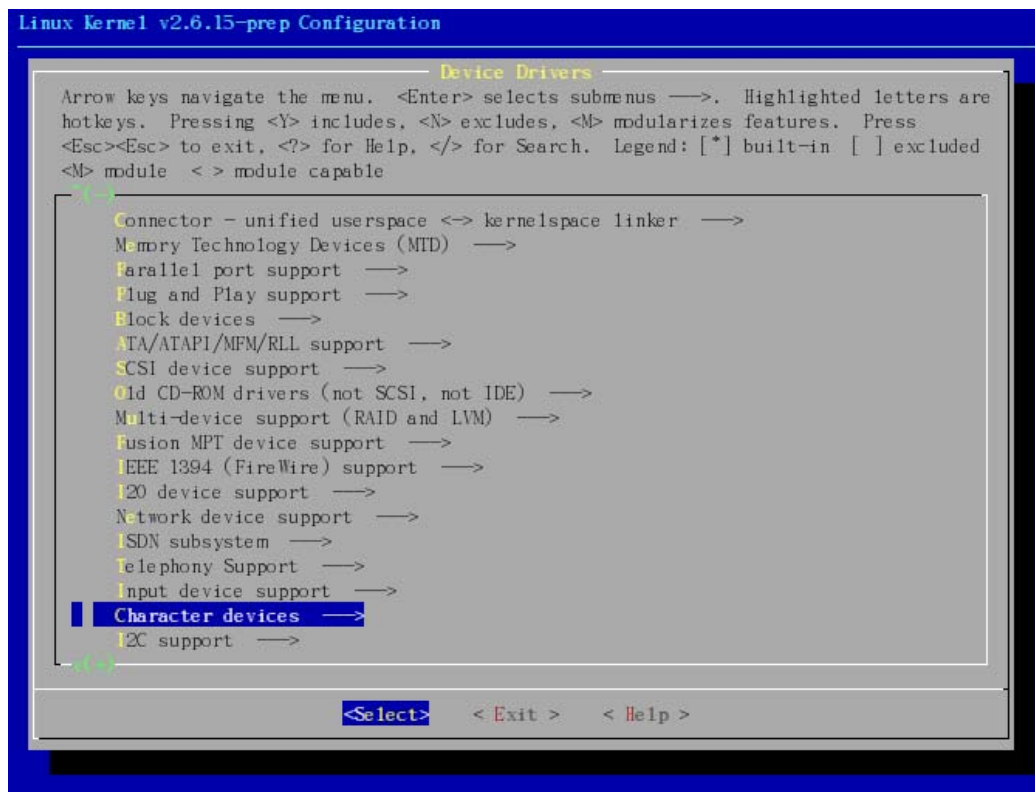


Fig:3

Select 「Serial drivers」

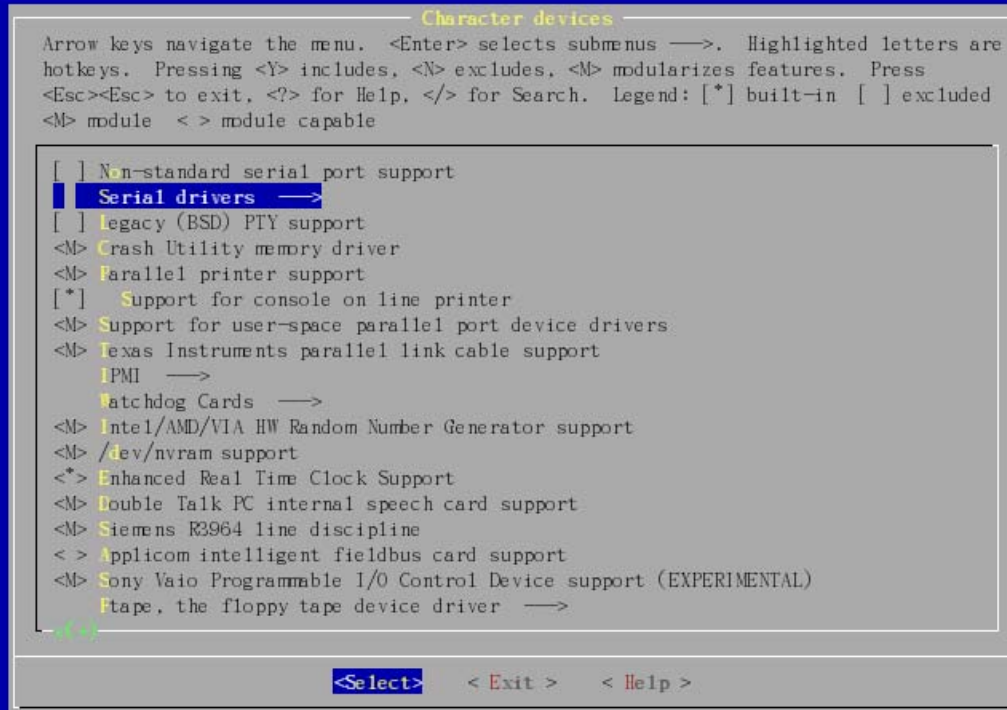


Fig:4

Choose 「Number of 8250/16550...」 .

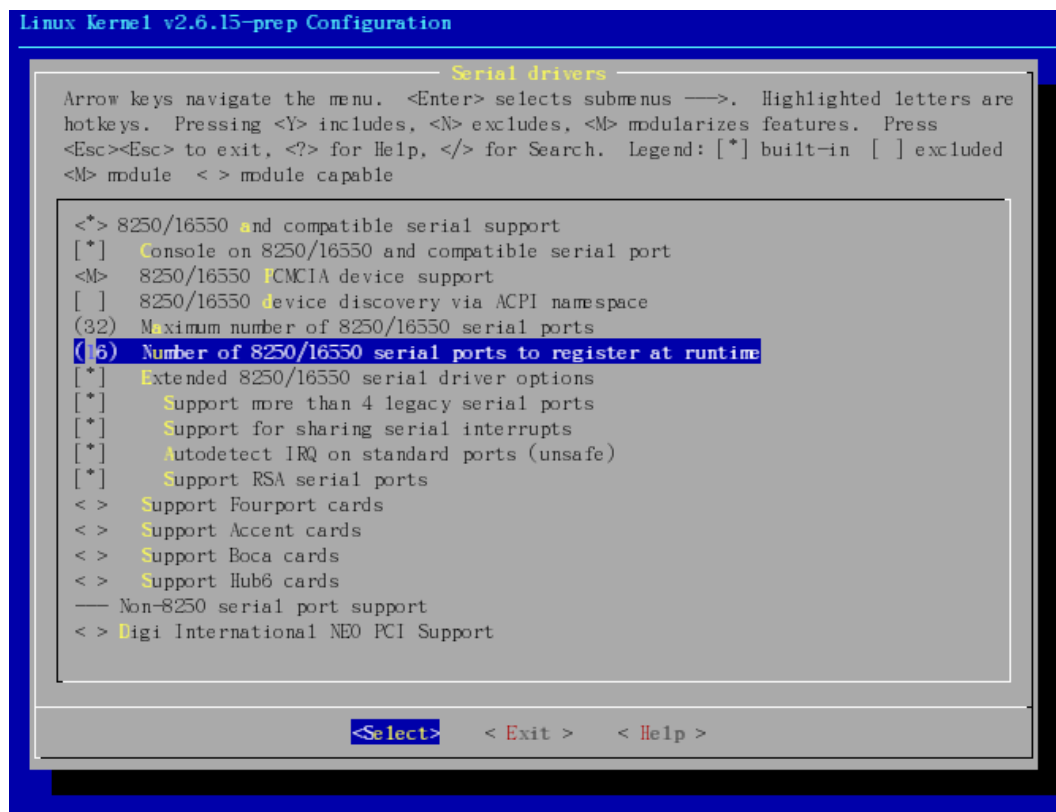


Fig:5

And type how many ports you want to install, for example ,16.

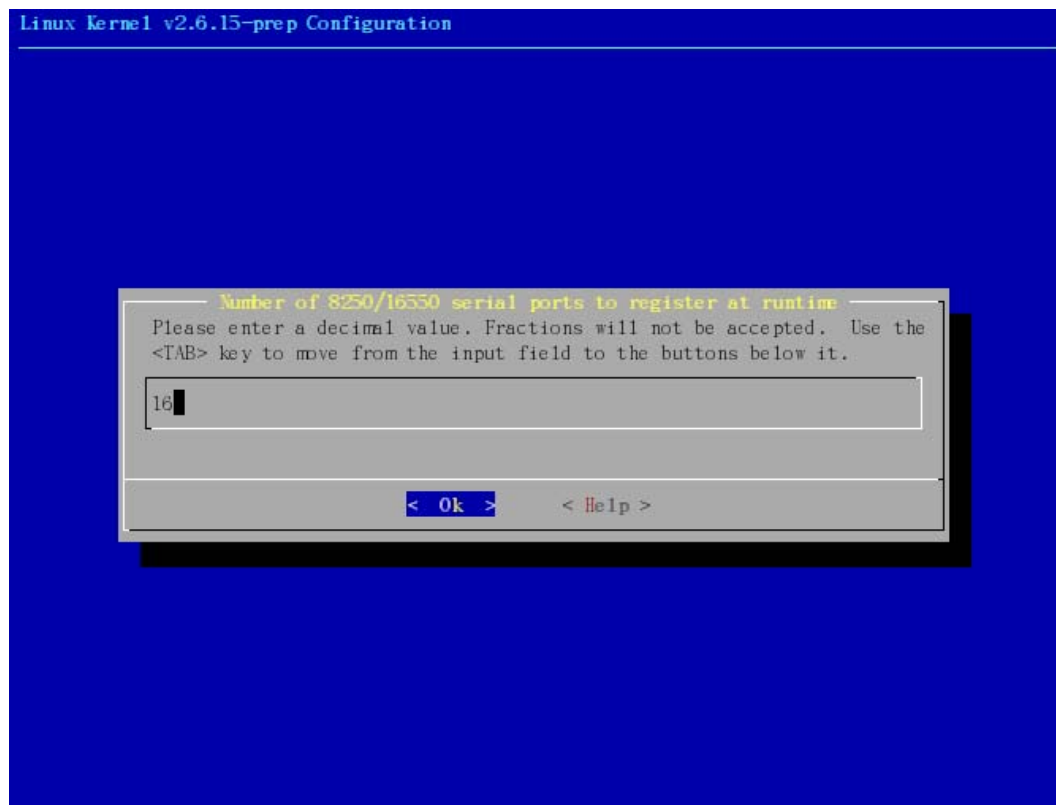


Fig:6

After finishing above configuration, you can begin to build/compile a new linux kernel.
The following URL is a tuition which can teach you how to build a kernel.

<http://www.linux.com/howtos/Linux-i386-Boot-Code-HOWTO/kbuild.shtml>

<http://kernelnewbies.org/FAQ>

<http://www.digitalhermit.com/linux/Kernel-Build-HOWTO.html>